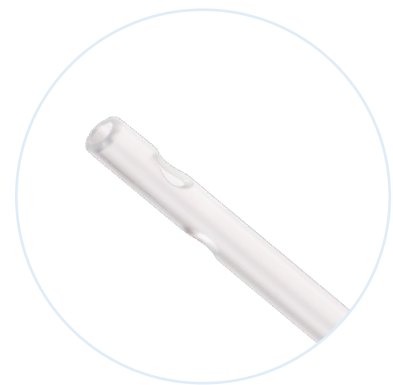
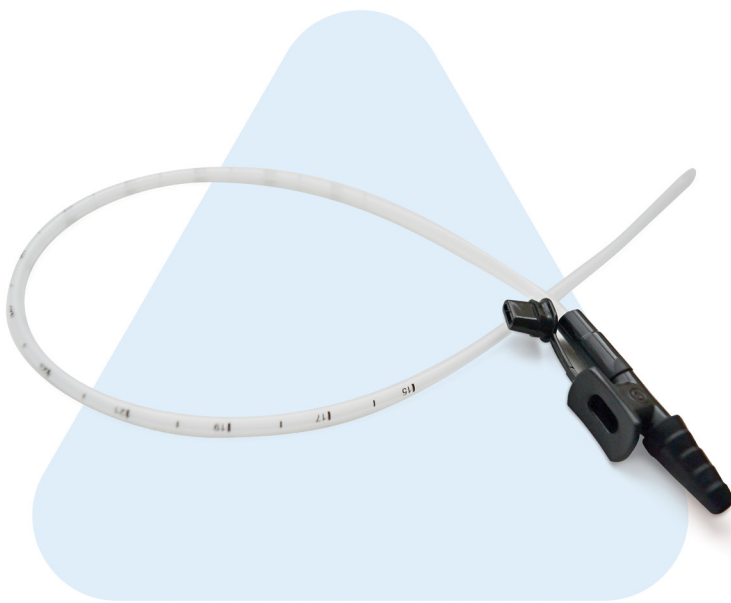


## Suction Catheters Open Tip (Finger Control with Cap)

Designed for easy passage through endotracheal and tracheostomy tubing, our range of Open Tip Suction Catheter with Finger Control and Cap is available in a variety of sizes and offers an open distal end with an elliptical eye for easy and effective suctioning.

- ⊗ Stepped connector
- ⊗ Transparent tubing
- ⊗ Colour coded
- ⊗ Available in a range of sizes
- ⊗ Finger control with cap



Open Tip

Suction Catheters Open Tip (Finger Control with Cap)						STERILE
RE-ORDER	DESCRIPTION	LENGTH	GAUGE	COLOUR	CARTON QTY	
AN040000	Suction Catheter, Open Tip, Finger Control with Cap	380mm	5Fr	Grey	50	
AN040001	Suction Catheter, Open Tip, Finger Control with Cap	380mm	6Fr	Light Green	50	
AN040002	Suction Catheter, Open Tip, Finger Control with Cap	560mm	8Fr	Light Blue	50	
AN040003	Suction Catheter, Open Tip, Finger Control with Cap	560mm	10Fr	Black	50	
AN040004	Suction Catheter, Open Tip, Finger Control with Cap	560mm	12Fr	White	50	
AN040005	Suction Catheter, Open Tip, Finger Control with Cap	560mm	14Fr	Green	50	
AN040006	Suction Catheter, Open Tip, Finger Control with Cap	560mm	16Fr	Orange	50	
AN040007	Suction Catheter, Open Tip, Finger Control with Cap	560mm	18Fr	Red	50	